

nineteen 46



SVC
379.7356
L293L
1946

Lan-Hi

JUNE SENIORS



OFFICERS

President.....	Gus Marzirik
Vice Pres.....	Mary Lou Spensler
Secretary.....	Dorothy Porter
Treasurer.....	Ralph Bolinger

CLASS HISTORY

The seniors this year really have had their hands full with loads of excitement.

First of all, the graduating seniors received their announcements and then their robes.

The seniors' class play this year, "The Doctor Has a Daughter," was one of the spring's big events and we had a big turnout.

The seniors spent about four months of this winter, selling and compiling the Lan-Hi.

This year when the seniors put on their annual Homecoming Dance we saw many familiar faces we had not seen for several war years.

This year the seniors were the guests of the juniors at the Prom, June 2. Bobbie Kay's orchestra played.

(Continued on page 21)

WHEW--WE MADE IT!



WE'RE REALLY THE TOP STUFF NOW

BOB ALLARD

Football; Basketball; Baseball; A Cappella; Boys' Ensemble; Class Play; L. Club; Sigma Iota Nu; Class Secretary; 3; Lan-Hi Staff; June '46.

GEORGE ALLISON

Trans. Springfield 2; Track; June '46.

DOROTHY AUSTIN

June '46.

JUNE BALES

Glee Club; Senior Choir; June '46.

NORMA JEAN BALLY

G.A.A.; June '46.

FRANCES BEDALE

Trans. Feishama 3; June '46.

MARY BENNETT

Student Council; June '46.

TWYLA BERGMAN

Girls' Glee Club; Debate Club; Class Secretary; 3; Orchestra; Lan-Hi Staff; June '46.

JERRY BERGSCHNEIDER

Student Council; June '46.

BETTY BISENTHAL

Lanecon; A Cappella; National Honor Society; Lan-Hi Staff; June '46.

JUANITA BOGUE

G.A.A.; Dramatic Club; Math Club; Senior Choir; A Cappella; Lan-Hi Staff; June '46.

RALPH BOLINGER

Basketball; L. Club; Class Treasurer; 4; June '46.

JOHN BOOKS

Football; Senior Choir; June '46.

ALBERT BROWN

June '46.

DONNA BROWN

Radio Club; Dramatic Club; Lanecon Club; Math Club; Senior Choir; National Honor Society; June '46.

CARL BURGER

Track; Intra-Mural Sports; Trans. Cathedral; June '46.

JOSEPHINE COTTI

Sigma Iota Nu; Lan-Hi; June '46.

MARY CIRILLO

June '46.

EVELYN CLINGAN

A Cappella; Girls' Ensemble; January '46.

BETTY COLLIER

Drama; June '46.

RICHARD CONNELL

A Cappella; Dramatic Club; Boys' Glee Club; Boys' Ensemble; Math Club; Senior Class Play; National Honor Society; June '46.

MARIANNE CORMENY

Senior Choir; June '46.

DONNA CORNISH

Math Club; Class President; 2; Quill and Scroll; Senior Choir; June '46.

NORMA CRAIG

Lanecon; Senior Choir; June '46.

WALTER CRUZAN

A Cappella; June '46.

DOUG DAVENPORT

Basketball; Intra-Mural Basketball; Sigma Iota Nu; Debate Club; Baseball; Trans. Springfield 2; June '46.

DORIS DeSPAIN

G.A.A.; Senior Choir; June '46.

GEORGE DICKINSON

A Cappella; Debate Club; June '46.

JO DiPASQUALE

June '46.

JAMES DUNN

Dramatic Club; Food; June '46.

TOM DURAKO

Class Vice-President; 2; Baseball; Basketball; L. Club; June '46.

ORVILLE EWING

Cheerleader; Senior Choir; Art Club; Lan-Hi Staff; June '46.

ROBERT FARMER

Intra-Mural Basketball; Debate Club; Track; Trans. Normal; June '46.

JAMES FALKER

June '46.

JANE FURRY

Sigma Iota Nu; June '46.

REGINA GANSKY

June '46.

DON'T LET YOUR STUDIES--



INTERFERE WITH GOING TO HIGH SCHOOL

RAY GEER

Track; Student Council; June '46.

MARSHALL HANDSHY

June '46.

BETTY HANKINS

Sigma Iota Nu; Quill and Scroll; Trans. Ball Township 3; June '46.

JEAN HANSON

Debate Club; June '46.

BILL HOLLER

January '46.

JOHN INGRAM

Dramatic Club; Art Club; Hi-Y; Tumbling; A Cappella; Mixed Ensemble; June '46.

SHIRLEY JENKERSON

G.A.A.; A Cappella; Art Club; Class Secretary, 2; June '46.

PAT JONES

G.A.A.; Math Club; Dramatic Club; Art Club; June '46.

HAROLD JORDAN

Trans. Williamsville 2; Hi-Y; Math Club; Student Council; Baseball; Track; June '46.

JACK KANE

Sigma Iota Nu; Football; Trans. Cathedral 2; June '46.

BETTY LOU KELLEY

Girl Reserves; Student Council; Sigma Iota Nu; National Honor Society; Lan-Hi Staff; Trans. Virden 1; June '46.

IRENE KENEASTER

G.A.A.; Jewera; Math Club; National Honor Society; June '46.

ARTHUR KOBIALKA

Football; Track; Quill and Scroll; National Honor Society; June '46.

BILL KOCHMAN

Track; Tumbling; Band; June '46.

ROBERT KOKE

January '46.

JEAN KORNFELD

G.A.A.; Dramatic Club; Student Council; Senior Class Play; A Cappella; Senior Choir; June '46.

JOHANNA KNAUS

June '46.

ESTELLE KNOX

Senior Choir; June '46.

JUNE KRUG

Math Club; A Cappella; Lan-Hi Staff; June '46.

MARGARET KRUEGER

Sigma Iota Nu; Trans. Ashburn 3; June '46.

ROY LANGFIELD

Senior Choir; A Cappella; June '46.

MARY LAWSON

June '46.

PAT LOCKHART

Laneson; G.A.A.; National Honor Society; June '46.

GRETA LUNDGREN

Trans. Springfield 3; June '46.

PAT LYMAN

Quill and Scroll; Class Treasurer 1; June '46.

ALICE MACK

Band; June '46.

GUS MARZINZEK

Basketball; Class President 1, 4; A Cappella; Boys' Ensemble; Lan-Hi Staff; June '46.

MARIE McCANN

Quill and Scroll; Sigma Iota Nu; June '46.

BETTY MEACHUM

Senior Choir; A Cappella; Art Club; June '46.

LILLIAN MEANS

June '46.

BETTY MEIRON

G.A.A.; Art Club; National Honor Society; June '46.

SAM MILLION

Class Treasurer, 2; Vice-President, 3; A Cappella; Boys' Glee Club; June '46.

MARGARET MITCH

Math Club; Laneson; Band; June '46.

MARGUERITE MONTALBANO

Student Council; June '46.

BETTY NAPIER

Math Club; Laneson; National Honor Society; June '46.

JOYCE PAGE

G.A.A.; Art Club; Senior Choir; June '46.

IT WAS A STRUGGLE



BUT WE WON

CHARLES PALMER
June '46.

IRMA PARCINSKI
June '46.

LOU ALICE PAYNE
National Honor
Society; Lan-Hi;
June '46.

DOROTHY
PICKRELL
Senior Choir;
Girls' Glee Club; A
Cappella; Usher-
ette; G.A.A.; Stu-
dent Council; June
'46.

KATHRYN PIERCE
Quill and Scroll;
June '46.

DOROTHY PORTER
Quill and Scroll;
Sigma Iota Nu;
Class Secretary; 4;
June '46.

EUGENIA PRIMM
Senior Choir; A
Cappella; June '46.

PAT RADFORD
Senior Choir;
June '46.

CHARLOTTE RAY
Landscape Quill
and Scroll; Math
Club; June '46.

LAURA RIBISI
January '46.

MINNIE
ROCKFORD
January '46.

ROBERT RODEMS
June '46.

KENNETH
RODGERS
Trans. Chillicothe
2; A Cappella;
Boys' Glee Club;
Boys' Ensemble;
June '46.

PAUL SCHRENK
Babel; June '46.

NORMA
SCHWARRERG
Student Council;
A Cappella; Usher-
ette; Math Club;
Luncheon Club;
President; 3; Quill
and Scroll; Nation-
al Honor Society;
Lan-Hi Staff; June
'46.

JUNE SHEPHERD
Trans. St. Louis
3; June '46.

JULIAN SMITH
Student Council;
Sigma Iota Nu;
Quill and Scroll; 1;
Club; Chess; Cadet;
Football; Baseball;
A Cappella; Lan-
Hi Staff; June '46.

SAM SORENSON
A Cappella; June
'46.

CLAUDE SOWLE
Student Council;
Quill and Scroll;
Sigma Iota Nu;
Radio Club; Dra-
matic Club; June
'46.

ARTHUR SPIEGEL
Basketball; Info-
Mural; Senior
Choir; A Cappella;
June '46.

MARY LOU
SPONSER
Luncheon; Math
Club; Senior Choir;
National Honor
Society; Class Vice-
President; Lan-Hi
Staff; June '46.

BETTY LOU
SPRING
June '46.

MARCELINE
STESKAL
G.A.A.; A Cap-
pella; June '46.

RADEANE
STEWART
G.A.A.; Senior
Choir; Trans. Mur-
physboro Township
2; June '46.

LORENE STOFFEL
Sigma Iota Nu;
Senior Choir; June
'46.

JAMES STONE
Trans. Feitshans
2; June '46.

KENNETH STOVER
A Cappella;
Mixed Ensemble;
Tumbling; Class
President; 2; June
'46.

VIRGINIA
STRUKEL
Luncheon; Art
Club; National Hon-
or Society; June '46.

MARY STURGIS
Art Club; G.A.A.;
Math Club; Debate
Club; Student Coun-
cil; A Cappella;
Girls' Ensemble;
Lan-Hi Staff; June
'46.

JEAN TAYLOR
Trans. Petersberg
4; June '46.

BERNADINE
TEMPLETON
Senior Choir;
Girls' Glee Club;
June '46.

MARY ROSE
TORG
Luncheon; Student
Council; A Cap-
pella; Mixed En-
semble; Lan-Hi
Staff; June '46.

BOB TUTTLE
Student Council;
Senior Choir; June
'46.

ROSEMARY
WEISSBERG
G.A.A.; Luncheon;
A Cappella; Girls'
Ensemble; June '46.

CECIL WELLER
Band; June '46.

ELNORE WEST
G.A.A.; A Cap-
pella; Girls' Ensem-
ble; Quill and
Scroll; Class Sec-
retary; 1; Mixed
Ensemble; National
Honor Society; Lan-
Hi Staff; June '46.

NOW WE CAN SUBSCRIBE TO ESQUIRE



NOT PICTURED

June '46.

BOB BARTLETT Debate Club; June '46.	DAVID BEATTY Trans. Springfield 3; C.A.P.C.; Lan-Hi; June '46.	LEWIS CASTER A Cappella; June '46.	PAUL CAVENEY June '46.	WILLIAM DELONEY June '46.	HERBERT DUERR Football; June '46.
PAT FERRY Art Club; June '46.	HAROLD GREEAR Band; June '46.	BOB HANSEN Math Club; Cheerleader; June '46.	ARTHUR HOCHMAN F.F.A.; Sigma Iota Nu; June '46.	MARY ELLEN KAVISH Lanecon; Art Club; Sigma Iota Nu; June '46.	CHRISTINE LASH Senior Choir; June '46.
RICHARD LeGRANDE June '46.	PAT LEHMAN June '46.	NADINE LOWE Lanecon; Senior Choir; Girls' Glee Club; June '46.	ROBERT MATRISCH Baseball; Orches- tra; June '46.	ALICE NAYLOR Senior Choir; A Cappella; June '46.	LOUIE NOLL Basketball; Foot- ball; L Club; A Cappella; June '46.
MARY PAYNE Senior Choir; June '46.	HENRY PIPER Band; National Honor Society; June '46.	RICHARD RANDALL June '46.	ELEANOR RUDOLPH Quill and Scroll; June '46.	LLOYD STABER June '46.	FRED STEPHEN U. S. Naval Re- serve; June '46.

IT WON'T BE LONG NOW

WILLIAM
WHITFORD
Trans. Keysport
& June '46.

JACK WICKS
January '46.

KENNETH
WOODARD
June '46.

DON WOODWARD
Art Club; June
'46.

BETTY WOOLSTON
Art Club; A Cappel-
la; June '46.

LOIS ZEPP
Senior Choir;
June '46.

MORTON ESPY
January '46.

JACKIE
STREMSTERFER
Sigma Iota Nu;
June '46.

MORRY VICTOR
June '46.

IRENE WALKER
Trans. Felshans
2; June '46.

OWEN WEAKLEY
June '46.

BURNICE
WILLIAMS
Band; June '46.

WALTER YOSWIG
June '46.

BOB BEAMS
Football; January
'47.

KENNETH
BRICKLER
F.F.A.; January
'47.

CEDELL CHANEY
January '47.

HELEN CHESTNUT
G.A.A.; A Cappel-
la; January '47.

TOM CIANFERRI
Football; Track;
L Club; January '47.

BETTY GRUBER
Band; January
'47.

BILL HANDSHY
Football; January
'47.

JOHN HARTUNG
January '47.

ALEX KLUNICK
F.F.A.; January
'47.

HERMAN
KORFANTA
Baseball; F.F.A.;
January '47.

ROY LUNICK
Senior Choir; A
Cappella; Boys'
Ensemble; Track;
January '47.

DON NOLTING
Intra-Mural Sports;
January '47.

BERNADINE
WALSH
January '47.

ROBERT
WASHINGTON
A Cappella; Jan-
uary '47.

ARTHUR WALTON
January '47.

DONALD WATSON
Football; L Club;
Senior Choir; Jan-
uary '47.

TAMERA ZELLERS
January '47.

JANUARY SENIORS

OFFICERS

President Bob Burko
Vice President..... Wilma Emerson
Treasurer Herb Hoehn
Secretary..... Pearl Selvaggio

Wilma Emerson



CLASS HISTORY

The class that is the 12th class now, sponsored a mid-year formal dance the 29th of December. The gym was decorated with a brightly lit Christmas tree and Christmas tree boughs along the side which formed a pretty background for dancing to the music of Bobbie Kay and his orchestra.

The seniors who graduated this June held their picnic at Lake Springfield, had their baccalaureate service in the school auditorium, then received their diplomas on June 6.

In the June graduating class, there were seventeen students in National Honor Society and three in January's class.

NOW WE'RE LOOKED UP TO



*Shirley
Coff*

*Peggy
Waters*



WE'RE NEARLY THERE---

CLARENCE
ADAMS

Trans. Fellowship;
I; Senior Choir;
January '47.

ANITA ALBRIGHT
January '47.

WARREN BAKER
Band; Student
Council; January
'47.

NORMA BEATTIE
G.A.A.; Tum-
blot; January '47.

DELORES BLACK
Student Council;
Senior Choir; Glee
Club; January '47.

BOB BURKE
Football; Basket-
ball; I Club; Track;
Intra-Mural Sports;
Senior Choir; Janu-
ary '47.

BRUCE DOPP

Football; Track;
Basketball; Intra-
Mural Sports; Radio
Club; I Club; Stu-
dent Council; Janu-
ary '47.

WILMA EMERSON
Class Secretary 2;
National Honor So-
ciety; January '47.

DOROTHY ERHART
Senior Choir;
January '47.

MAXINE
FRANCISCO
January '47.

JANET FYFE
January '47.

DONNA GORSEK
Student Council;
January '47.

MURIEL GRAHAM

G.A.A.; Student
Council; Lan-H;
Staff; National Honor
Society; January
'47.

HERB HOEHN
Senior Choir; A
Cappella; Class
Treasurer 3; Janu-
ary '47.

ALBERT LINDLE
Intra-Mural Sports;
Student Council;
January '47.

SHIRLEY McKEE
Band; January
'47.

MARY MOE
January '47.

DOROTHY
MOTTLEY
January '47.

JIM MURPHY

Track; A Cap-
pella; January '47.

EVELYN NIX
A Cappella; Janu-
ary '47.

JIM OWEN
Football; Senior
Choir; Class Presi-
dent; 1; January '47.

HAZEL PELUG
G.A.A.; January
'47.

VESTA PFLUG
G.A.A.; A Cap-
pella; January '47.

ROSEANN
RASHINSKI
Senior Choir;
Laneon; January
'47.

SHIRLEY ROSE

Class Secretary,
Senior Choir; Na-
tional Honor So-
ciety; January '47.

TOM SALLEE
Football; Intra-
Mural; Basketball;
January '47.

PEARL
SELVAGGIO
Student Council;
G.A.A.; Laneon;
Math Club; Glee
Club; Class Presi-
dent; 2; January
'47.

LEONARD SEMON
Senior Choir; Sig-
ma Iota Nu; Janu-
ary '47.

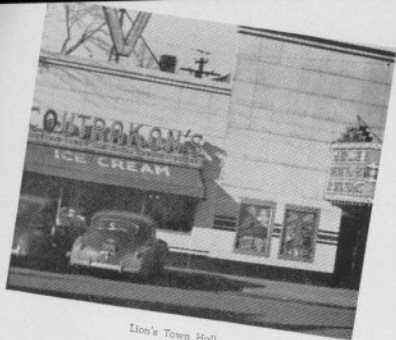
SHIRLEY STURM
Orchestra; Janu-
ary '47.

NORMA THOBURN
January '47.

PEGGY WATERS
January '47.

PHYLLIS
WESTERFIELD
G.A.A.; Math
Club; Student
Council; Jesters;
Debate Club; Or-
chestra; Lan-H;
Staff; A Cappella;
January '47.

BETTY ZINK
Senior Choir; Lan-
H Staff; G.A.A.;
Art Club; January
'47.



Lion's Town Hall

TO THE AVENUE

DEDICATION

Because we have the privilege of walking down the Avenue in the crisp days of fall, during the snows of winter, and in the "makes you want to walk slower" days of spring; because of the friendliness and support of its merchants; because of the many joyous hours we have spent in its "hang outs," we, the Senior Class, affectionately dedicate the 1946 Lan-Hi to the AVENUE.



Just the Avenue