

47

Lan Hi

SVC
379.7356
L293L
1947



SENIORS

ABBOTT, RUTH
 A Cappella 2, 3, 4
 Debate 1, 2, 3, 4
 G. A. A. 1, 2, 3, 4
 Lan-Hi 3, 4
 Speech Club 3, 4
 Dramatics 1, 2
 Phi-Beta-Chi 3, 4

ADAMSKI, BILL
 A Cappella 2, 4
 Intramural 1, 2
 Basketball 1, 2, 3, 4
 Track 1, 3, 4
 Football 1, 3, 4
 "L" Club 3, 4

AGNEW, LEONARD
 Transfer Gillespie High
 Lan-Hi 4

ALDERMAN, JIM

BALDRIDGE, DORIS
 G. A. A. 2, 3, 4
 National Honor Society

BALLOG, BETTY J.
 Debate Club 3, 4
 Orchestra 2, 3
 Speech Club 3, 4
 Dramatics 1, 2
 G. A. A. 1, 4
 National Honor Society



So Long Fellows, and You Gals

BAMBROUGH, MARJORIE

BENNETT, LEONA
 A Cappella 3, 4
 G. A. A. 1, 2, 3, 4
 Girls' Glee Club 1

BILYEU, BLANCHE
 G. A. A. 1, 2, 3



BODENHAMER, MARGARET
 A Cappella 3, 4
 Girls' Glee Club 1
 Student Council 1, 2, 3
 Lanston Club 1
 National Honor Society 4
 Lan-Hi 4

BOWMAN, AUDREY
 A Cappella 3, 4

BRCENEC, WILMA



SENIORS



BRISTOW, BETTY
A Cappella 3, 4

BUECKER, JUNE
Girls' Glee Club 1
A Cappella 4
Speech Club 4
Radio Guild 4

BUECKER, WILMA
A Cappella 2, 3, 4
Girls' Glee Club 1
G.A.A. 2
Lanecon Club 1
Lan-Hi 4
Speech Club 4



CAIN, DOUG
A Cappella 1, 2, 3, 4
Baseball 2, 3, 4
Football 3
Basketball 1, 2, 3, 4
Boys' Glee Club 1
Intramural 2
Lan-Hi 4
"L" Club 2, 3, 4
Boys Ensemble 3, 4
Mixed Ensemble 2
National Honor Society

CANTRALL, LORRAINE
Alpha Beta Omega 4
Art Club 1, 2, 3, 4
Phi Beta Chi 4

CAPRONICA, MARIE

We Are Through . . . Thanks to Our Pals



CELLITTI, ROSLINDA
A Cappella 2, 3, 4
Student Council 2, 3, 4
National Honor Society

CHAUDION, NADINE
Quill and Scroll 4
National Honor Society

CLEMONS, SHIRLEY
G. A. A. 1, 2, 3, 4
Lanecon Club 1, 2, 3, 4
Girl Reserves 1



COLEMAN, BETTY
Speech Club 4

COLIFF, AMELIA
Student Council 2

CONGER, MARILYN
A Cappella 2, 3, 4
Art Club 1, 2, 3, 4
Usherettes Club 2, 3, 4
Phi Beta Chi 4

SENIORS

CONNELL, BILL
 A Cappella 1, 2, 3, 4
 Boys Glee Club 1, 3
 Golf 2, 4
 Intramural 2, 3, 4
 Mixed Ensemble 2, 4
 Boys' Ensemble 2, 3, 4

COOLEY, URA
 Girls' Glee Club 2, 4
 Lanecon 2, 3
 Lan-Hi 4
 Quill and Scroll 4

CORDIER, PAT
 Lanecon Club 1

COREA, SHIRLEY
 A Cappella 3, 4
 Lan-Hi 4
 National Honor Society 4
 Quill and Scroll 4
 Speech Club 4
 Student Council 4
 Girls' Ensemble 4

CURRY, JIM
 Transfer S.H.S.
 Student Council 2, 4
 Intramural 2, 4
 Alpha Beta Omega 4
 Tennis 4

DANIELS, LORRAINE



Its Been Hard Work, But Lots of Fun

DAVIS, BOB
 A Cappella 3, 4
 Art Club 1, 2, 3, 4
 Speech Club 4
 Hi-Y 2, 3, 4
 Intramural 2, 3, 4
 Lan-Hi 3, 4
 Track 3
 Radio Guild 4
 Tennis 4

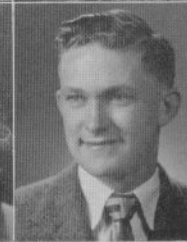
DAVIS, JANE

DAVIS, WALTER
 Band 1, 2, 3, 4
 Golf 2, 4
 Hi-Y 2, 3, 4
 Intramural 1, 2, 3, 4

DeCROIX, BERNICE
 Class Secretary 4

DELANEY, CHARLEEN
 Girls' Glee Club 2
 G. A. A. 1, 2
 Lanecon Club 3
 Lan-Hi 4
 Quill and Scroll 4

DUFNER, BILL
 A Cappella 2, 3, 4
 Baseball 4
 Football 1, 3, 4
 Boys' Glee Club 1, 3
 Intramural 2, 3, 4
 Track 1, 2, 4
 "L" Club 3, 4
 Boys' Ensemble 3, 4



SENIORS



ENGLAND, BARBARA

FAGAN, PAT

G. A. A. 1

FAGGETTI, MARY JEFF

Speech Club 4



FORSYTHE, DICK

Football 1

F. F. A. 3, 4

Intramural 1, 2, 3

Baseball 3

FRESCURA, ART

Band 2, 3, 4

National Honor Society

FRYHOFF, JANE

Art Club 1

Merchandising Club 4

We Hope Our Job Has Been Well Done



GABRIEL, MILDRED

Alpha Beta Omega 2, 3, 4

A. Cappella 1, 2, 3, 4

Speech Club 4

Girls' Glee Club 1

National Honor Society

GAINES, LORRAINE

Lanicon Club 1, 2

Merchandising Club 4

GANCI, JOE



GERDING, CLARA

G. A. A. 4

GERULA, LOUISA

Transfer

CORSEK, EDMUND

Intramural 1, 2, 3, 4

SENIORS

GRUBER, BETTY
Band 2

HABERLE, ROBERT
Baseball 2, 3, 4

HABERLE, VICTOR



JENKINS, MILDRED JANE
Majorette 2, 3, 4
Speech Club 4

HOWELL, GENE
A Cappella 2, 3, 4
Boys' Glee Club 3, 3
Intramural 3, 4
Tumbling 1
Boys' Ensemble 4
Mixed Ensemble 3, 4

HUDSON, NORMA JEAN
Girl Reserves 1



Four Years Seem Long, to Some I Know

HUFFMAN, DOROTHY
A Cappella 2, 3, 4
Art Club 1
Lan-Hi 4

HUNSAKER, JAY

HUTTON, RICHARD
Art Club 1, 2, 3, 4
Lan-Hi 4



IHNNEN, CLARA
G. A. A. 1, 2, 3, 4
Dramatic Club 1, 2
Usherettes 3, 4
Speech Club 4
Lan-Hi 4

IOCCA, JOHN
Baseball 1, 2, 3, 4
Football 1, 2, 3, 4
Basketball Mgr. 2, 3, 4
F. F. A. 2, 3, 4
Hi-Y 2, 3, 4
Intramural 2, 3, 4
"L" Club 3, 4

IRVING, VIRGINIA
Lanecon 1



SENIORS



JANES, SUE
 A. Cappella 2, 3, 4
 Alpha Beta Omega 2, 3, 4
 Mixed Ensemble 3, 4
 G. A. A. 1, 2, 3, 4
 Student Council 1
 Dramatic Club 4
 Phi Beta Chi 4
 Speech Club 4

JOHNSON, WENDELL

JONES, DON
 A. Cappella 2, 3, 4
 Boys' Glee Club 2
 Football 1
 Intramural 2, 3, 4



JUAREZ, CELIA
 Lanecon 1

KALIPS, MARJORIE
 G. A. A. 1, 2
 Lanecon 1, 2, 3, 4
 Student Council 3
 Lan-Hi 4

KASA, CHARLES
 Football 1, 2, 3, 4
 Hi-Y 2
 Intramural 1, 2, 3, 4
 Track 1, 2, 3, 4
 Tumbling 1, 2, 3, 4
 "L" Club 2, 3, 4

But Many Will Still Hate to Go



KAVIRT, DELORES
 Art Club 1, 2, 3, 4
 Speech Club 4
 Student Council 4
 Lan-Hi 4

KEMPER, MARY

KERR, LYNETTE
 Transfer 4
 Radio Guild 4



KLUNICK, NORMA JEAN
 G. A. A. 3, 4

KNOX, VIRGINIA
 Speech Club 4
 Girls' Glee Club 1
 Student Council 3

KOCHMAN, ESTHER
 A. Cappella 4

SENIORS

KOPATZ, ANNA
 A Cappella 3, 4
 Speech Club 4
 G. A. A. 1, 2
 Girls' Glee Club 1
 Lanecon 1, 2
 Student Council 4
 National Honor Society
 Lan-Hi 4

KOPATZ, LOIS
 A Cappella 3, 4
 Speech Club 4
 Usherettes 4
 Student Council 2
 Lan-Hi 4

KORFANTA, DOROTHY

KORNFELD, RALPH
 A Cappella 2, 3, 4
 Boys' Glee Club 2
 Intramural 1, 2, 3
 Track 2
 Basketball 2, 3, 4
 "L" Club 2, 3, 4
 Boys' Ensemble 3, 4

KRUGER, DOROTHY
 Lanecon 1

KUNZ, NORMA
 A Cappella 1, 2, 3, 4
 Girls' Ensemble 2, 3, 4
 Speech Club 4
 Student Council 4
 Usherettes 2, 3, 4
 National Honor Society



The Parties, Proms, Athletic Games

LAWSON, MARILYN
 Girls' Glee Club 1
 G. A. A. 1, 2
 Lanecon 1
 Quilt and Scroll 4
 Lan-Hi 4

LEE, VIRGINIA
 Speech Club 4

MABIE, JACK
 Football 2, 3
 Basketball 1, 2
 Speech Club 4
 Intramural 1, 2, 3
 Student Council 1
 "L" Club 2, 3, 4

MAGGIO, JASPER
 Student Council 2

MALENSKY, BETTY
 Girls' Glee Club 1
 G. A. A. 1, 2, 3
 Speech Club 4
 Lanecon 1, 2

MALONEY, MARGARET
 Alpha Beta Omega 2, 3
 National Honor Society
 Radio Guild 3, 4



SENIORS



McAFFEE, LILLIAN
 Student Council 3
 Lan-Hi 4

McCLURE, WILMA
 Speech Club 4

MEYERS, VIRGINIA
 Lanecon 1, 2, 3
 Student Council 3
 Future Distributors 4



MILLER, CHARLES
 Band 4
 National Honor Society 4
 Orchestra 1, 2, 3
 Student Council 1, 2, 3, 4
 State Student Council 3
 Tumbling 1
 Tennis 4
 Lan-Hi 4

MONTALBANO, SAM
 Student Council 1
 Speech Club 4
 Intramural 1, 2, 3, 4

MONTO, ALEX
 A Cappella 4
 Debate Club 4
 Intramural 1, 3, 4
 National Honor Society 4
 Radio Guild 4
 "L" Club 4
 Speech Club 4
 Track 1, 2, 3, 4
 Basketball 1
 Tennis 4

The Band, The Choir, Were All Our Aims



MOORE, JANE
 A Cappella 2, 3, 4
 Alpha Beta Omega 2, 3, 4
 Girls' Glee Club 1
 National Honor Society 4
 Speech Club 4
 Radio Guild 4
 Student Council 4

MOSTAKA, GEORGE
 Art Club 1
 Band 1, 2, 3, 4
 Debate Club 1
 Intramural 3
 Speech Club 4

NORBUT, RAYMOND
 Intramural 3
 Quill and Scroll 4



NOVICK, DONNA
 Majorette 2, 3, 4
 Quill and Scroll 4
 Girls' Glee Club 1
 Speech Club 4

PARNELL, NORMA
 Jan. 1947

PARNELL, HELEN
 Merchandising Club 4

SENIORS

PEACHER, ED
 A Cappella 3, 4
 Intramural 3, 4
 Cheerleader 3, 4
 Mixed Ensemble 3, 4

FALUSINSKI, WANDA

PETERSON, BERNADINE



PETREIKIS, DOROTHY

PFLUG, WANDA
 Alpha Beta Omega 2
 Lanecon 1, 2
 Lan-Hi 4

PHILLIPS, BILL
 Band 1, 2, 3, 4
 Intramural 1, 2, 3, 4



We're Proud of Our Deeds, That Is True

POOS, WALLY
 Baseball 1, 2, 3, 4
 Football 1, 2, 3, 4
 Basketball 1, 2, 3, 4
 Golf 1, 2, 3, 4
 Intramural 1, 2, 3, 4
 Quilt and Scroll 1, 2, 3, 4
 Track 1, 2, 3, 4
 "L" Club 1, 2, 3, 4

PRICE, SHIRLEY
 Art Club 3

RACE, ELEANOR



REES, MINNIE
 Student Council 1
 Band 2, 3, 4

RHOADES, RICHARD
 Band 1, 2

RILEY, MARY



SENIORS



ROBERTS, BILLIE
 A Cappella 4
 Art Club 1
 Girls' Glee Club 1

ROBINSON, DALE
 Alpha Beta Omega 2, 3, 4
 Orchestra 1, 2, 3
 Baseball 1, 2, 3, 4
 Football 1, 2, 3, 4
 Speech Club 4
 Hi-Y 2, 3, 4
 Intramural 1, 2, 3, 4
 Lan-Hi 4
 Student Council 1, 2, 3, 4
 Tumblers 1, 2, 3, 4
 "L" Club 2, 3, 4

ROCKFORD, ROSE
 Alpha Beta Omega 2
 G. A. A. 4
 Lan-Hi 4
 Student Council 1, 2
 National Honor Society



RODERICK, PAT

ROGERS, BETTY
 A Cappella 4
 Girls' Glee Club 1
 G. A. A. 1, 2
 Speech Club 4

ROSE, PAT
 Speech Club 4
 G. A. A. 1, 2, 3, 4
 Lan-Hi 4
 National Honor Society

In the Land of Tomorrow, There's Lots to Do



RUSCHEMEYER, SHIRLIE
 Majorette 3, 4
 Speech Club 4
 Girls' Glee Club 1

RUHL, BILLIE MAE
 A Cappella 3, 4

RUSSELL, GEORGE
 Band 1, 2, 3, 4
 Intramural 1, 2, 3, 4
 Basketball 1, 2, 3
 "L" Club 2, 3, 4
 Hi-Y 2, 3



SCHARAFIN, CHARLES
 A Cappella 2, 3, 4
 Baseball 2, 3, 4
 Boys' Glee Club 2
 Intramural 3, 4
 Basketball 1, 2, 3, 4
 "L" Club 2, 3, 4
 Psi Beta Chi 3, 4
 National Honor Society

SCHULER, NORMAN L.
 Alpha Beta Omega 3, 4
 Intramural 2, 3, 4
 Student Council 1

SCHWARBERG, MIDGE
 A Cappella 1, 2, 3, 4
 Girls' Glee Club 1
 G. A. A. 1, 2, 3, 4
 Student Council 1
 Tumbling 1
 Mixed Ensemble 4

SENIORS

SEELEY, MARY
G. A. A. 1, 2, 3, 4

SHARP, SHIRLEY
Transfer S.H.S.
A. Cappella 3, 4
Lan-Hi 4
Student Council 4

SHEDKO, FLORENCE
A. Cappella 3, 4
Girls' Glee Club 1
Lancon 1, 2



SHELTON, RAY
Band 1, 2, 3, 4
Art Club 1, 2
Track 2, 3, 4
Intramural 2, 3
National Honor Society 2, 3
"L" Club 2, 3, 4
Speech Club 4
Radio Guild 4

SHEPHERD, EVELYN

LOGAN, GEORGIA



We'll Make You Proud, Don't Ever Fear

SMITH, LAURA

SOKOLIS, RUTH
Transfer S.H.S.

SOLOMON, SHIRLEY
Alpha Beta Omega ... 2, 3
G. A. A. 1, 2



SPROUSE, JOHANNE
G. A. A. 1, 2

STANKAVICH, MARTHA
Speech Club 4
Quill and Scroll 4
Orchestra 1, 2, 3
National Honor Society 1, 2
Lancon 1, 2, 4
G. A. A. 1, 2, 4
Lan-Hi 4
Debate Club 4
Art Club 1

STEINMETZ, NORMA
Student Council 2, 3, 4



SENIORS



STEPHENS, THOMAS
Tumbling 3

STONE, ROBERT
Football 1, 2, 3, 4
Track 1, 2, 3, 4
F. F. A. 3, 4
Tumbling 1, 2, 3

STOREY, NORMAN
A Cappella 2, 3, 4
Lan-Hi 4



STRUCK, KARL
Art Club 1, 2, 3, 4
Lan-Hi 4

TAYLOR, BEVERLY
Speech Club 4

TAYLOR, BOB
Football 1, 2
"L" Club 1, 2

To Say, That's He--He Finished Here



THEOBALD, SHIRLEY
A Cappella 3, 4
Alpha Beta Omega 2
Lanecon 1, 2
Usherettes 3, 4

TOIGO, EVA
Lanecon 1, 2, 3

TOIGO, LOUISE
Girls' Glee Club 1
Lanecon 1, 2, 3, 4
Lan-Hi 2, 4
Majorette 2, 3, 4
Quill and Scroll 4
Student Council 1



TURLEY, GEORGE
Baseball Mgr. 1, 2, 3, 4
Football Mgr. 1, 2, 3, 4
Basketball Mgr. 1, 2, 3, 4
Intramural 1, 2, 3, 4
Student Council 1
"L" Club 2, 3, 4

UNDERWOOD, EMMA
A Cappella 2, 3, 4

UNLAND, ARLENE
Lanecon 1
A Cappella 3, 4

SENIORS

VICARI, STEPHEN	Science Club	4
VOSE, BOB	Basketball	3
	Lan-Hi	4
	Speech Club	4
	"L" Club	3, 4
	F. F. A.	2, 3, 4
	Intramural	2, 3, 4
	Dramatics	2
WALKER, NINA	A. Cappella	2, 3, 4
	Debate Club	3
	Girls' Glee Club	3
	G. A. A.	1, 4
	Lancon Club	1
	Quilt and Scroll	4
	Speech Club	4
	Mixed Ensemble	4
	Carnival Queen	3



WELLS, NORMA JEAN	Lan-Hi	4
--------------------------	--------	---

WHEELER, KENNETH

WEICHERT, JUANITA	Alpha Beta Omega	4, 3, 3
	Speech Club	4



Stay in There Gang, and Always Try

SENIORS NOT

SAM AIELLO	Baseball	1, 2, 3, 4
	Football	1, 2, 3, 4
	Intramural	1, 2, 3, 4
	"L" Club	2, 3, 4

KENNETH BEATTY	Art Club	2, 3, 4
	Phi Beta Chi	3, 4

JIM BOLLMAN	A. Cappella	3, 4
	Intramural	2
	Tumbling	1, 2, 3, 4

RICHARD BROWNLESS	Intramural	1, 2, 3, 4
--------------------------	------------	------------

JOE CONIGLIO	A. Cappella	1, 2, 3, 4
	Boys Glee Club	1, 2
	Intramural	3
	Tumbling	1, 2, 3, 4

DANTE CONTRI

JOHN DIXON	Basketball	1
-------------------	------------	---

FREDDIE FRANCISCO	Intramural	2, 3
	Student Council	2
	Tumbling	1, 2, 3, 4
	Basketball	1

ROBERT HERNDON	Band	2, 3, 4
	National Honor Society	2
	Track	1, 2, 3, 4
	"L" Club	3, 4
	Radio Guild	4
	Intramural	2, 3, 4

EARL HUDDLESTON

BUDDY HULBERT	F. F. A.	1
	Intramural	2

ROBERT JAMERSON

JOHN KELLUS

WILLIE LONG	Student Council	3
	Intramural	1

RICHARD LOOKIS	Football	3
	Intramural	2, 3, 4
	"L" Club	3, 4
	F. F. A.	3, 4

SENIORS



WHITFORD, ROBERT

WILLIAMS, JACKIE
Lanecon 2
Merchandising Club 4

WILLIAMSON, BETTY
Alpha Beta Omega .. 2, 3, 4
Lanecon 1, 2
Lan-Hi 4
National Honor Society
Student Council 1, 2



WOOD, KATHERINE

WOOD, LORRAINE
Lanecon 2
Speech Club 4

ZINTELIS, GLORIA
Girls' Glee Club 1
G. A. A. 1, 2, 3, 4
Lanecon 2, 3, 4
Student Council 2, 3, 4
Speech Club 4

Just Do Your Best for Lanphier High

PICTURED

JOE LUPARELL
Student Council 1

ALBERT KLUNICK
F. F. A. 4
Intramural 1, 2, 3, 4
Tumbling 1

JEAN McDOUGAL

JIM MEHAN
A Cappella 1, 2
Cheer Leader 3
Hi-Y 2
Intramural 1
Student Council 1

HAZEL MESTER

LERoy MOTTLEY
Intramural 1
Basketball 1

DON O'LAUGHLIN

CHARLES PARTON
A Cappella 1

JAMES PEARCE
Art Club 3
Hi-Y 2

MOE RAMIREZ
Baseball 2, 3, 4
Basketball 1, 3, 4
Football 1, 2, 3, 4
"L" Club 2, 3, 4
F. F. A. 4
Intramural 1, 2

DOROTHY RANDALL

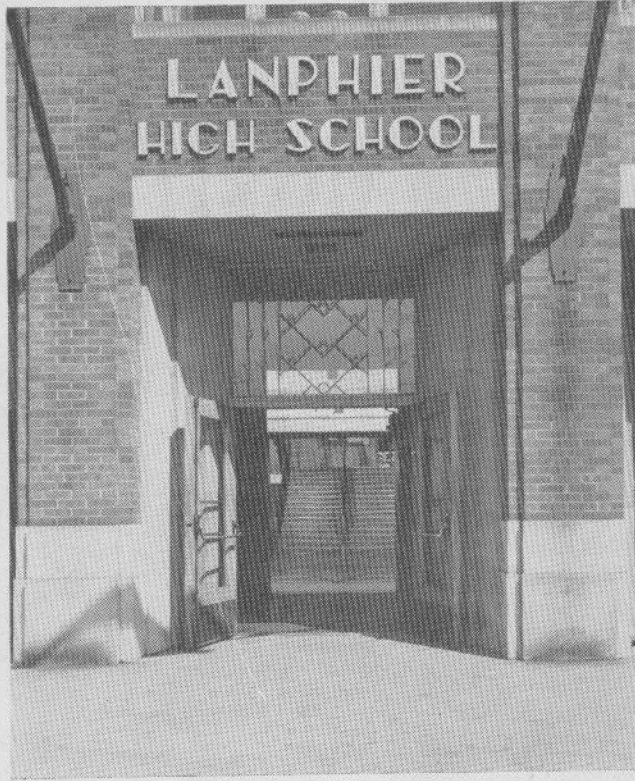
GLORIA RANDALL
A Cappella 3, 4
Speech 4
Girls' Glee Club 3
G. A. A. 2, 3, 4

DOMINIC ROSA
Tumbling 1, 2, 3

VINCENT SISTI
Football 1, 2
F. F. A. 3, 4
Intramural 3, 4
Track 3

BOB WARREN
Football 1

• • • • **LANPHIER**



DOOR TO KNOWLEDGE

THIS IS IT

