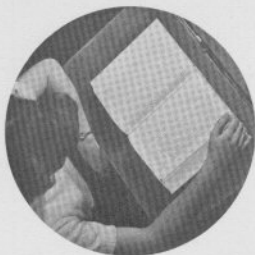


Laurel Hill  
50



SVC  
379.7356  
L293L  
1950



Leaf through this book.

# SENIORS



**Wayne Edward Ahlers**... Hi-Y 1, 2, 3, 4; Intramural 1, 2, 3, 4; Boys' Ensemble 4; Mixed Ensemble 3; A Cappella 2, 3, 4.

**Joe Albanese**

**Joyce J. Albrecht**... Math Club 2, 3, 4; A Cappella 4; O. B. E. 4; National Honor 4; Speech Club 2, 3, 4; Lan Hi 4; Debate 3; Psychology Club 4; Quill and Scroll 4.

**Dorothy Ann Ananias**... Psychology Club 4; O. B. E. 4; Lanphier Light 4; A Cappella 3, 4; Library Assistant 4; Quill and Scroll 4.

**Don Baepler**... Math Club 2, 3, 4; Key Club 3, 4; Language Club 3, 4; Speech Club 3, 4; National Honor 4; Lan Hi 4; A Cappella 2, 3, 4; Boys' Ensemble 3, 4; Intramural 3, 4; Debate 3; Class Treasurer 3; Quill and Scroll 4.

**Dolores Baker**... G. A. A. 1; Lanecon 1; Psychology Club 4; D. E. 4.

**Doris Louise Barlow**... Lanecon 1.

**Barbara Beam**... National Honor 4; Math Club 2; Language Club 3, 4; Speech Club 3, 4; Band 1, 2, 3, 4; Fall Play 4; Senior Play 4.



# SENIORS

**Dolores Beard** ... G. A. A. 1; Student Council 3, 4; A Cappella 2, 3, 4; Lan Hi 4; Class Secretary 4; National Honor 4; Quill and Scroll 4.



**Donald Henry Bilyeu** ... Art Club 1, 2, 3; Intramural 2, 3.

**Richard A. Birnbaum** ... Key Club 3, 4; Math Club 2, 3, 4; Language Club 3, 4; Speech Club 3; Camera Club 2; Hi-Y 1; Student Council 3, 4; Lan Hi 4; A Cappella 3, 4; Boys' Ensemble 3, 4; National Honor 4; Quill and Scroll 4.



**Paul H. Bojan** ... Math Club 2; Language Club 3, 4; Psychology Club 4; Speech Club 3, 4; Student Council 2, 3; Track 1, 2, 3; Intramural 1, 2, 3, 4; Senior Play 4; Fall Play 4.

**Mary Lee Bollman**

**Jeb Boswell** ... Student Council 2, 3, 4; Key Club 3, 4; Speech Club 3; Language Club 3, 4; Math Club 2, 3, 4; National Honor 4; A Cappella 2, 3, 4.



**Shirley Delores Brandon** ... Art Club 1; O. B. E. 4; Psychology Club 4; A Cappella 4.

**Barbara Jean Brantner** ... A Cappella 3, 4; Transfer Auburn 1.



and take a look

# SENIORS



**Mary Ann Brcenec**... Y Teen 2.

**Shirley Ann Burger**... Y Teen 1, 2; Psychology Club 4.



**Armand Eugene Buttwick**... A Cappella 2, 3, 4.

**Mary Lou Cain**... Y Teen 2.

**David Edward Capranica**... Psychology Club 4; Speech Club 4; Fall Play 4; Intramural 1, 2, 3, 4.



**John Carrico**... Psychology Club 4; Basketball 1; Intramural 2, 3; Senior Play 4; Transfer Cathedral 1.

**Birney Lee Carter**... Psychology Club 4; F. F. A. 1; Camera Club 2; Student Council 2; Lan Hi 4; Transfer Clinton Community 1.



at the work...

**Hilda Ruth Chambers**... Y Teen 3, 4; Class Treasurer 4.



# SENIORS



and play

**Bill Chandler**... I. Club 2, 3, 4; Football 3; Basketball 3, 4; Track 3, 4.

**LaVern Chestney**... G. A. A. 3, 4; O. B. E. 4; A Cappella 3, 4; Mixed Ensemble 4; Transfer Bloomington 3.



**Margaret Chestnut**... Art Club 1; Student Council 4.

✓ **John Charles Child**... Math Club 3; I. Club 2, 3, 4; Hi-Y 2, 3, 4; Psychology Club 4; Football 1, 2, 3, 4; Basketball 1, 2, 3, 4; Baseball 1, 2; Track 1, 2, 4; Intramural 1, 2.



✓ **Rosie M. Cirillo**... Lanecon 1; D. E. 4.

**Bette Clark**... Lanecon 1, 2; G. A. A. 1; Band 2, 3, 4.

✓ **Wanda Lea Coffinbargar**... Y Teen 1, 2; Psychology Club 4; A Cappella 4.



**George William Colvin**



of a Lanphier day.

## SENIORS



**Loy Jean Cornish** ... G. A. A. 1; Speech Club 2; Fall Play 2.

**Myrtle Eileen Cornish** ... Lanecon 1; A Cappella 4; D. E. 4.



**Janet Cumming** ... G. A. A. 2, 3; Math Club 2, 3; Language Club 2; Lan Hi 4; Usherettes 4; Senior Play 4; Transfer Springfield 2.



**Natalie D'Aboy** ... National Honor 4; G. A. A. 1, 2, 3; Art Club 1, 2; Language Club 3, 4; Math Club 2; Speech Club 2, 3, 4; A Cappella 2, 3, 4; Girls' Ensemble 4; Lan Hi 4; Quill and Scroll 4.

**Louis Dentino** ... L Club 3, 4; Football 3, 4; Basketball 3, 4; Transfer Feltsahans 3.



**Rosemary Diqangi** ... D. E. 4.

**Lillian Dinora** ... Lanecon 1, 2; D. E. 4.

**Kaye Jeanne Dopp** ... Psychology Club 4; Speech Club 4; Fall Play 4; Transfer Springfield 3.

# SENIORS

✓ **Carrol Gene Dufrer**... Math Club 2, 3, 4; Hi-Y 1; Student Council 1; Boys' Ensemble 4; A Cappella 2, 3, 4; Intramural 1, 2, 3, 4.

**Frank Dineen Dunkus**... Hi-Y 3, 4; Math Club 2, 3, 4; Psychology Club 4; Intramural 1, 2, 3, 4.

**Ralph Edward Dyer**... Art Club 1, 2, 3, 4; Student Council 3, 4.

**George Erhart, Jr.**

**Mary Jo Estaque**... Lanecon 1, 2, 3, 4; O. B. E. 4; Psychology Club 4; Lanphier Light 4; Quill and Scroll 4.

**Tom Fenimore**... D. E. 4; Transfer Burlington 4.

**Richard Dean Fetherolf**... Transfer Tuscola 2.

**Lois Jean Flamini**... A Cappella 3, 4.



Fresh in our mind

# SENIORS



**Donald Wayne Fox**... A Cappella 2, 3, 4; Football 1; Mixed Ensemble 4.

**Edith Lorraine Fox**... Lanecon 1, 2, 3; Math Club 2; Lanphier Light 4; Speech Club 2; Quill and Scroll 4.



**Dolores Lee Fyle**... Psychology Club 4.

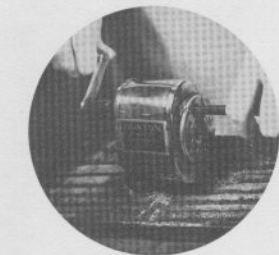
**Robert Frank Galasse**... Math Club 2, 3, 4; L Club 2, 3, 4; Key Club 3, 4; Football 1, 2, 3, 4; Basketball 1, 2; Baseball 1, 2; Golf 1, 2, 3, 4.

**John Wesley Garrison**... Hi-Y 4; Psychology Club 4; Band 1, 2, 3, 4.



✓ **Leonard Giannone**... L Club 3, 4; Psychology Club 4; Key Club 4; Intramural 1, 2, 3, 4; A Cappella 3, 4; Boys' Ensemble 4; Football 1, 3, 4; Track 1, 2, 3, 4.

**Fred Irwin Goulden**... Hi-Y 2, 3, 4; Language Club 3, 4; Psychology Club 4; Intramural 1, 2, 3, 4.



is the daily grind

✓ **Walter Green**... L Club 3, 4; Football 2; Intramural 1, 2, 3; Student Council 4.





# SENIORS



of practice . . .

- ✓ **Eileen Mary Grigalunas** . . . Lanecon 1, 2, 3, 4; Art Club 2; Student Council 2; National Honor 4; Psychology Club 4; Speech Club 4; Lan Hi 4; Quill and Scroll 4.

**Richard O. Hall** . . . F. F. A. 1, 2, 3; Student Council 3; Psychology Club 4; Key Club 4; L Club 3, 4; Football Mgr. 4; Track Mgr. 1, 2, 3, 4; Intramural 1, 2, 3, 4.



- ✓ **Norma Jean Handsby** . . . Psychology Club 4; Speech Club 2; Transfer Chatham 2.

**Mary Jane Harris** . . . National Honor 4; Psychology Club 4; A Cappella 3, 4.

**Rosalie Harriss** . . . Lanecon 1; D. E. 4.

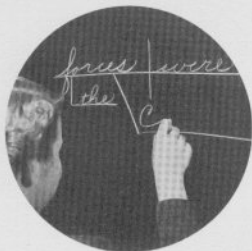


**Marilyn Lorraine Havener** . . . Psychology Club 4.

**Pat Hentseher** . . . Math Club 3, 4; G. A. A. 3, 4; Library Assistant 3, 4; Band 2, 3, 4; Speech Club 4; Senior Play 4.



**Darrel Lee Hinrichs** . . . F. F. A. 2, 3, 4; Intramural 1, 2, 3, 4.



and learning.

# SENIORS



**Rose Hoffman**

**Richard Arthur Hollis**... Math Club 2, 3, 4; Language Club 3, 4; L Club 2, 3, 4; Hi-Y 3, 4; Key Club 3, 4; Student Council 2; A Cappella 2, 3, 4; Football 1, 2, 3, 4; Basketball 1; Intramural 1, 2, 3, 4; Class Secretary 3; Boys' Ensemble 3, 4; National Honor 4.



**Janet Marion Holmin**... Psychology Club 4; Fall Play 4; Senior Play 4; Transfer Lancaster, Pennsylvania 4.

**Joan Holzaepfel**... Lanecon 1, 2, 3, 4; O. B. E. 4; Band 1, 2, 3, 4.



**Barbara Ellen Hucceby**... Art Club 1; G. A. A. 1; National Honor 4.

**Theadows H. Hunter**... Transfer Moore House Parish Training School 3.



**Mary Jane Jackson**... A Cappella 3, 4; Mixed Ensemble 4.

**Stuart Allen Jameson**... Math Club 3, 4; L Club 3, 4; Intramural 2, 3, 4; Football Mgr. 3, 4; Transfer Hamond 2.

# SENIORS

**Shirley Jean Jester** ... G. A. A. 2; Psychology Club 4; A Cappella 3, 4.

**Jo Ann Louise Johnson** ... Psychology Club 4; Band 1, 2.

**Earnest Gilbert Jones** ... F. F. A. 2, 3, 4; Psychology Club 4; Cheerleader 3; Intramural 4.

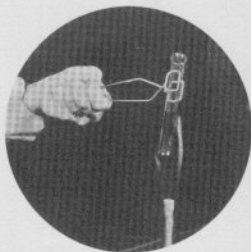
**Margy Jones** ... Math Club 3, 4; O. B. E. 4; Lanphier Light 4; Quill and Scroll 4.

**Linda Lou Jordan** ... Lanecon 1, 2, 3, 4; Psychology Club 4; O. B. E. 4.

**Janet J. Kickner** ... Student Council 2, 3, 4; A Cappella 3, 4; Psychology Club 4; G. A. A. 1, 2, 3, 4; Language Club 3; Speech Club 4; Senior Play 4.

**Jeanene Kinney**

**Loretta June Klasing** ... Art Club 1; Student Council 1, 2, 3; A Cappella 2, 3, 4; G. A. A. 1.



and, "Watch out, it's burning!"

# SENIORS



✓ **Beverly Joan Kloppie**... Psychology Club 4.

✓ **James B. Kluckman**... Hi-Y 4; F. F. A. 2, 3, 4; Intramural 3.



✓ **Frances Koskey**... Lanecon 1, 2, 3, 4; O. B. E. 4; National Honor 4; Class Secretary 4; Lan Hi 4; Band 1, 2, 3, 4.

✓ **Louis C. Kreppert**... Key Club 3, 4; Math Club 3, 4; Psychology Club 4; Intramural 3, 4; Class V. President 4; National Honor 4.



**Peggy Jo Kunz**... Math Club 2, 3; O. B. E. 4; Class V. President 3.

**Charlotte Elaine Lantz**... G. A. A. 1; Lanecon 1; D. E. 4.



As we walk around

**Joe Frank Lascody, Jr.**... L Club 3, 4; Psychology Club 4; Speech Club 4; Baseball 2, 3, 4; Intramural 1, 2, 3, 4; Fall Play 4.

**Richard E. Lawson**... L Club 3, 4; Psychology Club 4; Intramural 1, 2, 3, 4; Basketball 1; Football 1, 3, 4; Track 1, 3; A Cappella 3, 4; Hi-Y 4; Senior Play 4.



# SENIORS



**Stanley Lefavor**... F. F. A. 3.

**Delores Ann Lehman**... G. A. A. 1; Math Club 3; A Cappella 3, 4.

**Helen Louise Link**... Lanecon 1, 4; O. B. E. 4; Psychology Club 4; Math Club 3, 4; Lan Hi 4; Quill and Scroll 4.

**Jim D. Litchfield**... I. Club 2, 3, 4; Math Club 3, 4; Key Club 3, 4; Hi-Y 3, 4; Psychology Club 4; Intramural 1, 2, 3, 4; Class V. President 4; Football 1, 2, 3, 4; Track 2, 3, 4; Quill and Scroll 4.

**Laura Lee Luparell**... Lanecon 1; Art Club 1, 2; A Cappella 3, 4.

**Dorothy Marchetti**... Student Council 1; Math Club 2, 3, 4; G. A. A. 2, 3; Psychology Club 4; Language Club 3, 4; A Cappella 3, 4.

**Richard M. Mari**... Art Club 1, 2, 3, 4; Key Club 3, 4; Lan Hi 4; Band 1, 2, 3, 4; Drum-Major 2, 3, 4; Intramural 3, 4; Class V. President 3; Class President 4.

**Lois Matson**



we hear this sound.





Here's a good trick

# SENIORS



**Gertrude McCaw**... Psychology Club 4; Art Club 4; Speech Club 4; Fall Play 4; Debate 3; Transfer Springfield 3.

**Charles Paul Meiron**



**Robert Frank Mesarosch**... L Club 2, 3, 4; Speech Club 3, 4; Football 1, 2, 3, 4; Intramural 1, 2, 3, 4; Baseball 3; Student Council 2; A Cappella 2, 3, 4; Mixed Ensemble 4.

**Angie Montalbano**... G. A. A. 1, 2, 3, 4.



✓ **Leonard R. Moore**... Psychology Club 4; L Club 3, 4; Football 1, 3, 4; Basketball 3; Intramural 1, 2, 4.

✓ **Nancy Lee Moos**... Lanecon 1, 2, 3, 4; O. B. E. 4; National Honor 4; Band 1, 2, 3, 4; Lan Hi 4.



✓ **Vivian Louise Najim**... Psychology Club 4; A Cappella 2, 3, 4; Girls' Ensemble 3, 4; D. A. R. Award 4.

**Norma Neece**... Lanecon 1, 2; G. A. A. 1, 2; Math Club 3; Psychology Club 4; Language Club 3, 4; A Cappella 3, 4.

# SENIORS

**Marilyn Jean Olds**... National Honor 4;  
Transfer Saskatchewan, Canada.

**Mary Owen**... Language Club 2, 3, 4; Ush-  
erettes 2, 3, 4; Lan Hi 4; Student Council 1;  
Quill and Scroll 4.

✓ **Earl Owens**... Language Club 2, 3, 4; Math  
Club 2, 3, 4; Key Club 4; Intramural 1, 2, 3,  
4; A Cappella 3, 4.

**Sue Owens**

✓ **Mary Jane Padget**... D. E. 4; National Honor  
4.

**Nancy Page**... G. A. A. 3, 4.

**Juanita Palmer**... Art Club 1; Y Teen 1;  
D. E. 4; National Honor 4.

✓ **Patricia Ann Peter**... Fall Play 3; A Cap-  
pella 2, 3, 4; Girls' Ensemble 3, 4; Speech  
Club 1.



if you make it click.

# SENIORS



**Harold Pierson Pettit**...Tumblers 1, 2, 4.

**Fred D. Pflug**...Hi-Y 2, 3, 4; Band 1, 2, 3, 4; Intramural 3, 4; Tumblers 2, 3.



✓ **Theresa Irene Pierce**...Lanecon 1; A Cappella 3, 4.

**Jeanette Plesh**...Lanecon 1, 2, 3, 4; National Honor 4; O. B. E. 4; Usherettes 2, 3, 4; Class Secretary 3; Lan Hi 4.



**Jacqueline Powers**...Lanecon 2; Transfer Springfield 2.

**Norma Proctor**...O. B. E. 4; Lanecon 1, 2, 3, 4; Psychology Club 4; G. A. A. 1, 2; A Cappella 3, 4.



We wish to announce

**Mary Lou Prytherch**...Lanecon 1, 2; G. A. A. 1, 2.

**Helen Ramey**...G. A. A. 1, 2, 3, 4.





# SENIORS



the shoeless bounce.

✓ **Melvin E. Rath**...Key Club 3, 4; Student Council 2, 3, 4; National Honor 4; Math Club 3; Lan Hi 4; Lanphier Light 4; Quill and Scroll 4.

**George Thomas Rees**... Art Club 1, 4; Language Club 3, 4; Tumblers 1, 2, 3, 4.



**Richard Leroy Reeve**...D. E. 4; Band 1, 2, 3, 4; Intramural 1, 2, 3, 4.

**Robert Floyd Reeve**...Camera Club 2; D. E. 4; Psychology Club 4; Intramural 1, 2, 3, 4; Tumblers 1.



**Mary Ann Reim**...G. A. A. 1, 2, 3, 4; Math Club 2, 3, 4; Language Club 3, 4; Camera Club 2; Y Teen 3; Psychology Club 4; Speech Club 4; Lan Hi 4; Fall Play 4; Tennis 2, 3, 4; Senior Play 4; Quill and Scroll 4.

**Jean Ann Ribar**...Lanecon 1, 2, 3; D. E. 4; Student Council 1; Library Assistant 4.

**Eleanor Riech**...Lanecon 1; Math Club 3, 4; Psychology Club 4.



**Betty Robinson**



Attend . . .

## SENIORS



**Mary Pauline Robinson**... Y Teen 4.

**Don Roderick**... F. F. A. 2, 3, 4; L Club 3, 4; Psychology Club 4; Football 1, 2, 3, 4; Basketball 1, 3, 4; Baseball 1; Intramural 2; Track 3.



**Carolyn Rowland**... Lanecon 1; Fall Play 4; Senior Play 4.

**Allan E. Russell**... Key Club 3, 4; Band 1, 2, 3, 4; Lan Hi 4; Assistant Band Director 2, 3, 4; Quill and Scroll 4; National Honor 4.



**Angelo Sbarbati**... Student Council 1; Psychology Club 4; A Cappella 3, 4; Track 1; Intramural 1, 2, 3, 4.

**Eric Hart Schmidt**... Key Club 3, 4; L Club 2, 3, 4; Psychology Club 4; Band 1; Football 1, 2, 3, 4; Tumblers 1, 2, 3, 4; Track 1, 2, 3, 4; Intramural 1, 2; Quill and Scroll 4.



**Norma Jean Schroeder**... Lanecon 1, 2; Math Club 3; G. A. A. 1, 2, 3.

**John Maurice Schwarberg**... Key Club 3, 4; L Club 3, 4; Class Treasurer 4; Football 3, 4; Intramural 2, 3, 4; Track 1, 2, 3, 4.

# SENIORS

**Vincent P. Selvaggio**... Art Club 1, 2; Key Club 3, 4; A Cappella 2, 3, 4; Student Council 1; Intramural 1, 2, 3, 4; Football 1; Boys' Ensemble 3, 4.



✓ **Erma Louise Sennings**

**James S. Shevokas**

**Marilyn Ruth Siebert**... G. A. A. 1, 2, 3, 4; Lanecon 1, 2; Math Club 3; Tennis 1, 2; Psychology Club 4; A Cappella 3, 4.



**Marvin Eugene Siefferman**... Key Club 4; Hi-Y 3, 4; Intramural 3, 4.

**Rose E. Simanella**... G. A. A. 1; A Cappella 2, 3, 4.



✓ **Jo Ann Skoda**... Lanecon 1, 2, 3.

**Barbara Smith**... A Cappella 3, 4.



guys and gals

# SENIORS



**Lavena Smith**... Lanecon 1, 2, 3, 4; Psychology Club 4.

**Dorles Spille**... G. A. A. 1, 2, 3, 4; Math Club 2; Student Council 3, 4; Psychology Club 4; Usherettes 3, 4; Fall Play 4; Lanecon 1, 2, 3; Speech Club 2, 3, 4; Senior Play 4.



✓ **Joanne Spring**... Lanecon 1, 2, 3, 4; Math Club 3, 4; Psychology Club 4; O. B. E. 4; Speech Club 3; Lan Hi 4; Quill and Scroll 4.

**Mary Lee Stevenson**... Math Club 2; Language Club 3, 4; Psychology Club 4; National Honor 4; Band 1, 2, 3; Lan Hi 4; Quill and Scroll 4.

**Bill Stewart**... Student Council 2, 4; Camera Club 2; A Cappella 4; Football Mgr. 1.

**Elizabeth Jean Stone**



**Pat Stoutenborough**... Lanecon 4; O. B. E. 4; Transfer Decatur 4.

**Helen Strain**... Lanecon 1, 2, 3, 4; Language Club 3, 4; O. B. E. 4; Psychology Club 4; Usherettes 3, 4; National Honor 4.



with your billfold pals.



# SENIORS



**Martha Strode**... Lanecon 1, 3; Math Club 3; Psychology Club 4; D. E. 4.

**Dick Suffern**... F. F. A. 2, 3, 4; Psychology Club 4; Transfer Chatham 2.

**Patricia Syrcle**... Y Teen 1, 2; Math Club 3; Lanecon 1, 2, 3; Psychology Club 4; Student Council 2, 3, 4.

**Theresa Jean Tavernor**... Senior Play 4.

**William F. Tober**... Psychology Club 4; F. F. A. 3; Intramural 1, 2, 3, 4.

**Donna Mae Unland**... D. E. 4; Psychology Club 4; G. A. A. 1, 2, 3; A Cappella 3, 4.

**Ruth Marilyn Varvil**... National Honor 4; Transfer Newton 4.

**Davy Lee Vidor**... Hi-Y 4; Psychology Club 4; Camera Club 2; A Cappella 3, 4; Senior Play 4.



There has passed so much time





That we'll finish our rhyme.

## SENIORS



**Glenna Mardelle Wahl**... A Cappella 2, 3, 4; Girls' Ensemble 2, 3, 4; Mixed Ensemble 3.

**Marshall Lee Wainwright**... F. F. A. 1, 2, 3, 4; Psychology Club 4; Intramural 2, 3, 4.

**Robert Pollard Warner**... F. F. A. 3; Transfer Cathedral 2.

**Georgeana Ann Waschevski**... Art Club 1; Psychology Club 4; Speech Club 4.

**Evelyn Weissberg**... G. A. A. 1, 2, 3; Math Club 2, 3, 4; A Cappella 2, 3, 4; Girls' Ensemble 3, 4; Quill and Scroll 4.

✓ **Edward William Werner**... Key Club 4; Language Club 3, 4; L Club 2, 3, 4; National Honor 4; Class President 3, 4; Football 1, 2, 3, 4; Basketball 1, 3, 4; Baseball 2, 3, 4; Track 1, 2, 3.

**Peggy Jean West**... Language Club 2, 3, 4; A Cappella 2, 3, 4; Student Council 2; National Honor 4.

✓ **Shirley Jean Wheeler**... G. A. A. 1, 2, 3; Language Club 3, 4; Psychology Club 4; Math Club 2; National Honor 4; A Cappella 3; Lan Hi 4; Quill and Scroll 4.



# SENIORS

**Teresa Wiley**...G. A. A. 1, 2; Y Teen 3, 4; Math Club 2, 3, 4.



**Gerald Roy Williams**...Hi-Y 3, 4; Math Club 2; Camera Club 2; Band 2, 3, 4.

**Marie Williams**...Band 2, 3, 4.



**Rayburn Williamson**...Math Club 2, 3, 4; Key Club 3, 4; L Club 4; Intramural 2, 3, 4; Band 2, 3; Football 4; Student Council 2; National Honor 4.

**Ann Marie Wilson**...Lanecon 1, 2; G. A. A. 1, 2, 3; Math Club 2, 3; Student Council 2; Psychology Club 4.



**Doris Jean Wilson**...Lanecon 1; Psychology Club 4.

**Mack Withrow**...Art Club 1, 2, 3, 4; Math Club 3; A Cappella 3, 4; Mixed Ensemble 4.

**Bill Dale Woodrum**...Psychology Club 4; Intramural 1, 2; Tumblers 1.



So here with this sign

# SENIORS



**Molly Yamnone**... A Cappella 2, 3, 4; Class President 3; G. A. A. 1; Girls' Ensemble 2, 3, 4; National Honor 4.

**Richard Anthony Yaris**... Intramural 1, 2, 3, 4.



**Donald Eugene Young**... L Club 3, 4; Hi-Y 1, 2, 3, 4; Psychology Club 4; Football 1, 3; Tumblers 1, 2, 3; Intramural 1, 2, 3, 4; Student Council 1; Quill and Scroll 4.

**Richard L. Zimmer**... Hi-Y 4; Band 1, 2, 3, 4; Intramural 4.

**Clariece Lou Zimmerman**... G. A. A. 1.



**Shirley Bell Zink**

**Fannie Ethelda Powell**... Y Teen 2, 3, 4.

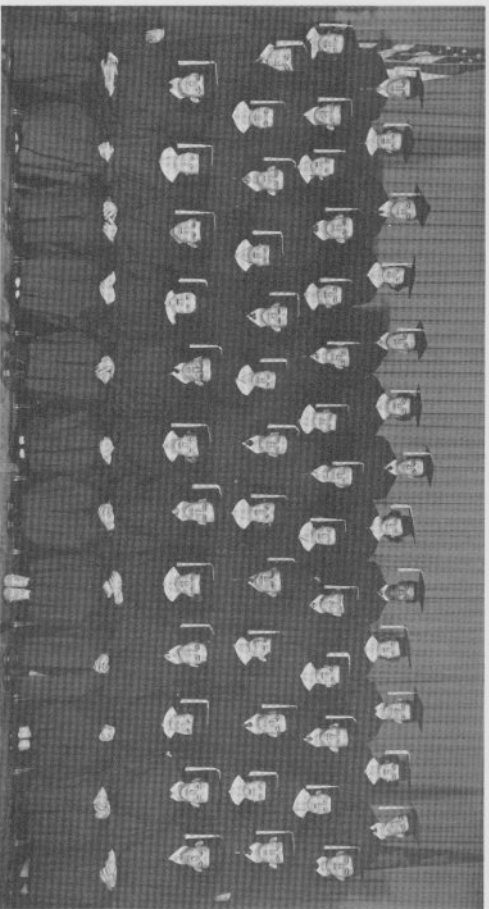
**Jeannie Camille McDougal**... Psychology Club 4.



is the end of the line.

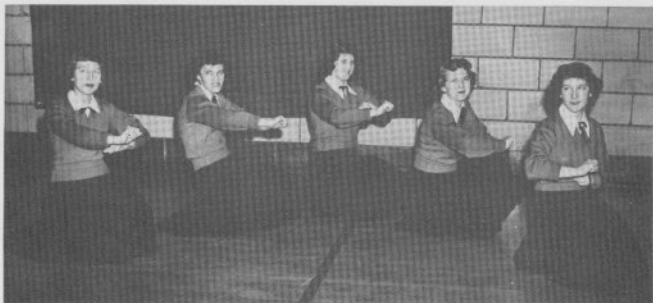






Lamplier High School  
 Graduation Class January 1950

**First Row:** Robert Cox, Betty Beakman, Eugene Gant, Mona Barber, Bill Shlanick, Judy Mae, John Spitzer, Betty Turley, Andy Socconomo, Lois Palmer, Dentine Rondozzo, Albert White.  
**Second Row:** Ron Saline, Carol Keeler, Don Muir, Dorothy Winick, Stanley Stankevich, Marilyn Furnace, Richard Dietrich, Betty Howman, Don Green, Nora Vihali, Richard King, Beverly Fischer, Robert Muir.  
**Third Row:** Kerry Griest, Lloyd Weller, Rosalie Gilbert, Don Swick, Norma Mokes, Edward Smith, Shirley Shouace, Tom Clark, Robertie Franklin, Martha Willis, Mary Jane Harris, Don Vasconcellos, Pat Campo, Don Henninger.  
**Fourth Row:** Don Erickson, Crystal Carter, Jim Lawson, Bery Mae, Julius Rockman, Mary Kowevich, Virgil Varner, Joyce Howard, Jack Higgins, Leis Calverlyght, John Wilson, Donna Drake, Hugh Ventress.



Gloria Hickman, Jo-Ann Turnbull, Mary Giannone, Barbara Cunningham, Norma Gothard.

## CHEERLEADERS

Yea Orange! Yea Black! was throughout this past athletic season one of the typical yells which the Lanphier cheerleaders shouted as they led sports fans in cheering on the Lions to a victory.

In new flashy orange and black uniforms the girls of the pep squad performed a splendid job of bringing the enthusiasm and spirit of the student body to blend into lively, rhythmic

cheers which let the athletes know the students' support.

Under the direction of a new coach, Mr. Leonard Rake, the candidates for cheerleaders were chosen on the basis of qualifications and competition the same as team members.

For their many hours of practice and efforts to make this past year successful in cheering, these girls indeed deserve many an oskey-wah-wah of praise.

