

18  
19  
54

LANE



SVC  
379.7356  
L293L  
1954



ADAMO, PHILIP JOSEPH  
Baseball 1,2,3; Basketball 1,2;  
Key Club 4; Senior Class Play 4.



ADAMS, MILDRED LaVERN  
Distributive Education 4; G.A.A.  
1; Psychology Club 4; Y-Teens 2.



ALBRECHT, FRANK WAYNE  
Band 1, 2, 3, 4; Orchestra 3, 4;  
Psychology Club 4.



ANDERSON, EDWARD THOMAS  
Intramural Basketball 1,2,3,4.



ANDREWS, HOWARD LEE  
Basketball 1,2,3.



ANKROM, JAMES EDWIN  
Intramural Basketball 2, 3, 4;  
Track 2,3,4; "L" Club 2,3,4.



AUSMUS, JAMES THOMAS  
Football 1,2,3; Golf Team 2;  
Art Club 1,2,3,4; Student Council  
2; Intramural Basketball 1,  
2,3.



BARRON, RUTH EILEEN  
Lan Hi Staff 4; Psychology Club  
4; Y-Teens 1; Quill & Scroll 4.



BARTLETT, GERALD  
A Cappella Choir 2,3,4; National  
Honor Society 4.



BEDÖLLI, CAROL LOUISE  
Y-Teens 1,2,3,4.

**BEEKMAN, HELEN**  
Lanphier Light Staff 4.

**BENEKY, LAVINA**  
Transfer from Ursuline Academy; Distributive Education 4.



**BENTERS, JEANNE KAY**  
Transfer from Amboy High School; Lan-Hi Staff 4; Librarian 4; Quill & Scroll Treasurer 4.

**BERRY, JANET**  
A Cappella Choir 2,3,4; Lanecon 1.



**BILLINGSLEY, DAVID DUKE**  
Basketball 1; Track 1,2; Distributive Education 4; Intramural Basketball 1,2,3,4; Psychology 4.

**BLACK, DONALD PATRICK**  
Football 1; Band 1,2,3,4; Orchestra 1,2; Psychology 4.



**BLAKEMAN, DELMAR EUGENE**  
Baseball 2,3,4; Basketball 1,2,3; Football 1; Intramural Basketball 4; "L" Club 2,3,4; Psychology 4.

**BODENHAMER, MARILYN**  
Y-Teens 3.



**SENIOR CLASS OFFICERS**

PAUL BORDIGNON .....  
.....Vice President  
BARBARA THIESSEN .....Secretary  
JACK FISCHER .....President  
DORIS BRYANT .....Treasurer



**BORDIGNON, PAUL**  
Rifle Team 1,2,3,4; Track 1,2;  
Hi-Y 3,4; Class Officer 4.

**BOUSSAD, SHIRLEY MAE**  
A Cappella Choir 3,4; Psychology 4.



**BRANCATO, PATRICIA JEAN**  
Cheerleading 2,3,4; Class Officer 3; Lancon 1; Lan-Hi 4; Y-Teens 1.

**BROWN, DONNA MARLENE**  
Distributive Education 4; Psychology 4.



**BROWN, RON WAYNE**  
Tumbling 1.

**BRYANT, DORIS FAYE**  
Class Officer 4; National Honor Society 4; Psychology 4; Student Council 1,2,3,4; Y-Teens 1,2,3; Fall Play 4.



**BURTLE, VIRGINIA LEE**  
Lanecon 1.

**CARTER, NANCY MARTHA**  
A Cappella 2,3,4 Distributive Education 4; Lanecon 1,2,3.

*Many seniors study advanced typewriting.*



**CHAMBERS, RALPH**

Psychology Club 4; Intramural 1, 2, 4; Baseball 1.

**CHIMENTO CHARLES WILLIAM**

Intramural Basketball 1, 3, 4; Football 1, 2, 3, 4; Swim Team 2; Track 1, 2, 3, 4; Key Club 4; "L" Club 2, 3, 4.



**CLARK, JAMES HENRY**

Baseball 3; Football 1, 2, 3, 4; Track 1; Key Club 4; "L" Club 4; Student Council 1, 2, 3, 4; Debate Squad 4; Science Club 3, 4.

**CLARK, VERNER**

Basketball 1, 2, 3, 4; Track 1, 2, 3, 4; A Cappella Choir 2, 3, 4; "L" Club 1, 2, 3, 4; National Honor Society 4; Football 1, 2, 3, 4.



**CLAY, PATRICIA**

Swim Team 3; A Cappella 4; G.A.A. 3, 4; Lanecon 4; Psychology 4; Y-Teens 1, 2.

**COCKAYNE, ROBERTA**

National Honor Society 4; Psychology Club 4.



**COMPTON, GAIL KEITH**

Basketball 1; Football 1, 2, 3, 4; A Cappella Choir 4; HI-Y Club 3, 4; Debate Squad 4; Track 1, 2, 3, 4; Golf 3, 4.

**COURTWHRIGHT, FLOYD**

Psychology Club 4.



**CULP, MARY**

G.A.A. 1, 2, 3, 4; Lanecon 1, 2, 3, 4; Lanphier Light Staff 4; National Honor Society 4; Y-Teens 2, 3, 4; Psychology Club 4; Quill & Scroll Secretary 4.

**CUNNINGHAM, PATRICIA**

A Cappella Choir 2, 3, 4; Mixed Ensemble 3; Art Club 2; F.T.A. 2; Science Club 3, 4.





CUNNINGHAM, ROBERT

Football 1, 2, 3; Track 1; "L"  
Club 2,3,4; Librarian 1; Psychol-  
ogy 4.



D'ABOY, JOHN

Swim Team 2; Tennis 1,2,3,4;  
Intramural Basketball 1, 2, 3, 4;  
Band 1,2,3,4; Band President 4;  
Orchestra 2,3,4; Fall Play 4.



DANIEL RICHARD LEE

Distributive Education 4.



DAVIDSON, A. LLOYD

Cross Country 3; Band 2,3,4.



DENTON, DOROTHY

Lanecon 3,4; Psychology 4; Y-  
Teens 1,2; Lanphier Light Staff  
3,4.



DEIHL, GEORGIA



DIGIROLAMO, GLADYS

Cheerleading 1,2,3,4; Tumbling  
1; G.A.A. 1; Lanecon 1,2,3.



DIPASQUALE, MARY

G.A.A. 1,2; Student Council 1,2,  
3,4; Debate Squad 4.



DRENGWITZ, IRENE

A Cappella Choir 3,4; Y-Teens 4.



DUNN, CORDELL

Baseball 2,3; Football 1; Rifle  
Team 1,2; A Cappella Choir 3,4;  
Boys' Ensemble 4; Lan-Hi Staff  
4; Key Club 3,4; Fall Play 4.

EDWARDS, ROBERT ALLEN  
Band 1,2,3,4; Psychology 4.

EGGLESTON, BETTY RUTH  
G.A.A. 1.



EGNOT, BENNY JOHN

Baseball 1; Basketball 1,2,3,4;  
Football 1, 4; Track 1, 2, 3, 4;  
A Cappella 3,4; Boys' Ensemble  
4; Hi-Y Club 4; "L" Club 2,3,4;  
Lanphier Light Staff 4; Psychol-  
ogy Club 4.

ERICKSON, ALMA JEAN

Band 1,2,3; F.T.A. 3,4; Lan-Hi  
Staff 4; G.A.A. 1,2,3,4; Librarian  
1,2,3,4; Science Club 3,4.



FABRO, JOAN

Transfer Ursuline Academy 4.

FARRIS LARRY WILLIAM

Basketball 1; Golf 2; Intramural  
Basketball 1, 2, 3, 4; Distributive  
Education 4; Student Council 1.



FAUCON, TOM WAYNE

Intramural 1,2,3,4; Psychology  
4; Basketball 1,2.

FIEDRICH, BRUNHILDE

Transfer from Gelsenkirchen-  
Buer, Germany.



The "bunny hop" at the LAN III  
dance.

**GIGANTI, PAUL**

Student Council 1,2; Psychology 4.

**GILPIN, MARY ANN**

Class Officer 3; Usherettes 3,4; Y-Teens 1; Fall Play 4; Senior Class Play 4; National Honor Society 4.



**GOIN, ZELLA PAULINE**

A Cappella 3,4; Distributive Education 4.

**GRIFFITH, TOM**

Tumbling 2; Key Club 3,4; National Honor Society 4; Psychology 4; Student Council 3,4; Rifle Team 3.



**GROSS, RICHARD**

Psychology 3,4.

**GUINN, THOMAS**

Band 1,2,3,4; Hi-Y 1,2; Psychology Club 4; F.F.A. 1,2,3,4; Science Club 1; Tumbling 1; Orchestra 4.



**HAMMOND, SANDRA ANN**

Orchestra 2,4; Librarian 3; Science Club 3,4; Usherettes 4; Senior Class Play 4; Student Council 2.

**HAYWOOD, JACK**

Art Club 1,2,3,4; Student Council 1.



**HAZLETT, WILLIAM**

Baseball 2,3,4; Golf 3,4; Intramural 1,2,3,4.

**HENDERSON, DONALD ROBERT**

Baseball 3,4; Basketball 1,2; Football 1,2,3,4; Track 1,2; Intramural 1,2,3,4; Class Officer 3; Key Club 2,3,4; "L" Club 3,4; Lanphier Light Staff 4; Psychology 4; Quill & Scroll.







**HENINGER, ROBLEY DOUGLAS**

Golf 3,4; Rifle Team 2; Hi-Y 4;  
Key Club 3,4; Debate Squad 4.



**HENRY, JIM FREDERICK**

Transfer from Martin High  
School, Martin, Tennessee, 4th  
Year; Baseball 4; Football 4; Hi-  
Y 4; "L" Club 4.



**HENRY, PAUL EDWARD**

Transfer from Martin High  
School, Martin, Tennessee, 4th  
year; Track Manager 4.



**HILL, PHILIP FRANK**

Track 1; Cross Country Track 1;  
Key Club 3,4.



**HOFFMAN, THOMAS ANTHONY**

Art Club 2.



**HOUSER, SHARON**

A Cappella 3,4; G.A.A. 1,2,3,4;  
Librarian 3.



**HOUSER, SHIRLEY**

Cheerleading 2; Librarian 4;  
Tumbling 1,2; A Cappella Choir  
4; G.A.A. 1; Y-Teens 3; Psy-  
chology Club 4.



**HUDDLESTON, BARBARA**

G.A.A. 1,2,3,4; Lanphier Light  
Staff 4; Science Club 2,3,4; Quill  
& Scroll 4.



**HUNSLEY, DONALD ROBERT**

Intramural 1,2,3,4; Band 2,3,4;  
Psychology 4.



**HUNTER, CAROL RAY**

HUSSEY, FRANCES MARIE

Tumbling 2; Art Club 1,2,3,4;  
G.A.A. 1,2,3,4; Y-Teens 1,2,3,4;  
Fall Play 4.

INGRAM, EMERY LEE

Psychology Club 4.



ISELL, JOHN EDWARD

Baseball 2,3,4; Basketball 1,2,3;  
Tumbling 1; F.F.A. 1,2.

JACKSON, ALAN

Baseball 4; Basketball 1; Foot-  
ball 1,2,3,4; Intramural 2,3,4;  
Key Club 4; "L" Club 2,3,4;  
Lanphier Light Staff 4; Student  
Council 1; Science Club 3, 4;  
Track 1,2,3.



JACKSON, RONALD LEE

Tennis 1,2; Tumbling 1; Band  
1,2,3,4; Orchestra 4; F.T.A. 2,  
3,4; Librarian 3; Psychology 4;  
Student Council 1, 2; Senior  
Class Play 4; Band Officer.

JAMES, MARJORIE

A Cappella Choir 3,4; G.A.A. 1;  
Psychology 4.



JOHNSON, JERRY DABNEY

Intramural 1,2,3,4.

JOHNSON, JOAN

Lanecon 1; Psychology 4.



Advanced mathematics students



**JOHNSON, LOUIS**  
Transfer from Cathedral; Intra-  
mural 3,4.

**JONES, KEITH**  
Band 1,2,3,4; Intramural 1,2.



**KEEFNER, KATHRYN**  
A Cappella Choir 4; Lan Hi 4;  
Transfer from Ursuline Acade-  
my 2; Future Nurses of America  
3; Psychology Club 4.

**KING, BRENDA JEAN**  
Cheerleading 2, 3; Distributive  
Education 4; Psychology 4; Y-  
Teens 1; Lanecon 1.



**KLEINSCHMIDT, SHIRLEY**  
JANE  
Transfer from Merrill, Wiscon-  
sin 3; Psychology 4.

**KOVALIK, IRV**  
Orchestra 1,2,3,4.



**KREPPERT, CAROLYN**

**KUHN, DAVID STEVEN**  
Tumbling 1; A Cappella 2,3,4;  
Art Club 1; Psychology 1; Senior  
Class Play 4.

*Physics students enjoy experiments.*



KURNISKIE, RAYMOND

LANHAM, JOYCE

Cheerleading 3, 4; Lanecon 1;  
Lan Hi Staff 4; Psychology Club  
4.



LAURENT, RAYMOND EUGENE

A Cappella 3,4; Distributive Edu-  
cation 4; Librarian 3,4; Student  
Council 1.

LAURENT, ROBERT

Track 1,2,3.



LAVIN, PATRICIA

Psychology Club 4; A Cappella  
Choir 4; Lan-Hi Staff 4; Trans-  
fer Ursuline Academy 2.

LEE, JO ANN

Transfer from Ursuline Acade-  
my 2.



LOFBOOM, PATRICIA LEE

Science Club 3,4; A Cappella  
Choir 3,4; Lanecon 1,4; Lan Hi  
Staff 4; Y-Teens 3,4; Quill &  
Scroll 4.

LUCASEY, RAYMOND PATRICK

Golf 3; Track 1,2; Tumbling 1,  
2,3; Intramural 1,2,3,4; Debate  
Squad 4; Psychology 4; Distribu-  
tive Education 4.



LYNCH, ELAINE DIANNE

A Cappella Choir 4; G.A.A. 1;  
Psychology 4; Radio Guild 1;  
Y-Teens 3,4.

MAISENBACHER, DONALD

Football 1; Tumbling 1, 2, 3;  
A Cappella Choir 2,3,4; Psychol-  
ogy 4; Track 1.





MALSBURY, BETA CAROL

Transfer from Colorado Springs, Colorado 3; Lanphier Light Staff 4; Psychology Club 4.

MARTIN, RAYMOND ALLEN

Distributive Education 4; Art Club 2; D.E. State Officer.



MARTIN, ROBERT LEE

Baseball 1,2,3,4; Basketball 1,2; Football 1,2,3; Track 1; A Cappella Choir 3,4; Fall Play 4; "L" Club 2,3,4; Lan Hi Staff 4; Key Club 3,4; Quill & Scroll.

MASLAUSKI, WILLIAM

Basketball 1,2; Football 1,2,3,4; Track 1,2,3,4; A Cappella Choir 2,3,4; Boys' Ensemble 4; Art Club 1,2,3,4; Class Officer 3; Key Club 2,3,4; Lan-Hi Staff 4; "L" Club 2,3,4; Lanphier Light Staff 4; National Honor Society 4; Student Council 1; Senior Class Play 4; Quill & Scroll 4; Golf 3,4.



MATEJKA, PATRICIA

A Cappella 3,4; National Honor Society 4; Senior Class Play 4.

McCARTY, JEANNE

Radio Guild 4; Psychology Club 4; National Honor Society 4; Lanphier Light Staff 4; Quill & Scroll.



McCARTY, JO ANN

G.A.A. 1,2,3,4; Distributive 4; Psychology 4.

McCLURE, DONALD EUGENE



McCORMACK, SHARON ANN

Y-Teens 2,3; Lanecon 2; A Cappella Choir 3,4.

McFARLAND, RAY

Hi-Y Club 2; Psychology Club 4.

McMULLEN, CHARLES ROBERT  
Tumbling 1,2; Band 2,3,4.

MEADOR, DALE WAYNE  
Band 1,2,3; Distributive Education 4; Key Club 4; Student Council 1.



METZGER, DOLORES

Distributive Education 4; Lanecon 1; Psychology Club 4; Y-Teens 3.

MILLER, MARILYN

Transfer from F.H.S. Psychology 4; Distributive Education 4.



MITTS, KENNETH

Distributive Education 4; Hi-Y 4.

MOATS, MURIEL ANN

Orchestra 1,2,3,4; Y-Teens 1.



MOHR, PATRICIA ANN

F.T.A. 2; G.A.A. 1; Lan-Hi 4; Psychology Club 4.

MONSON, JO ANN

F.T.A. State Officer 3; A Cappella Choir 4; Art Club 2; F.T.A. 1,2,3,4; Debate Squad 4; Science Club 3; National Honor Society 4.



*Children's party by the Home and Family Life class.*



MONTONYE, TANYIA

Transfer from S.H.S. 2; A Cappella Choir 3,4.

MOORE, JOHN WALTER

Orchestra 2,3,4.



MOSKE, CHARLES RICHARD

Senior Class Play 4.

MOTTAR, ROBERT

Baseball Manager 2,3; Football Manager 1,3; Intramural 1,2,3,4; Hi-Y 3,4; "L" Club 2,3,4; Psychology 4; Track 1.



MURRAY, HAROLD JOSEPH

Transfer from C. H. S.

NAPIER, ROBERT HENRY

Band 2,3,4; Track 3.



NAUMANN, CLAUDIA

A Cappella Choir 3,4; G.A.A. 1; Lancon 1; Psychology 4.

NELSON, FRANKLIN LEWIS

Distributive Education 4.

*A skit by the dramatics class.*



**NELSON, IAN SANDY**

Football 1,3,4; "L" Club 4; Debate Squad 4.

**NESBITT, MARILYN JEAN**

A Cappella Choir 2,3,4; F.T.A. 2,3; Lanphier Light Staff 4; Y-Teens 3,4; Science Club 3,4; National Honor Society 4; Quill & Scroll 4.



**NEVITT, JEANETTE ANN**

G.A.A. 1,2,3,4; National Honor Society 4; Art Club 1.

**O'CONNOR, RHETA**

Transfer from Ursuline Academy.



**OLMSTEAD, VIVA JUNE**

Transfer from Springfield High School 3; A Cappella Choir 3,4; Girls' Ensemble 4; Lan-Hi Staff 4; G.A.A. 3.

**O'NEILL, ROBERT LEE**

Intramural Basketball 1, 2, 3, 4; Psychology 4.



**PADGET, GLEN**

Rifle Team 1,2,3; A Cappella Choir 3,4; Art Club 1,2,3,4; Key Club 2,3,4; Lan-Hi Staff 4; National Honor Society 4; Psychology 4; Quill & Scroll 4.

**PAONI, DONALD EUGENE**

Intramural 1,2; Art Club 1,2.



**PARKS, BARBARA JANE**

A Cappella 2,3,4; Youth for Christ 3,4; Mixed Ensemble 3; Lan-Hi Staff 4; Art Club 1,2,3; Quill & Scroll 4; National Honor Society 4.

**PARNELL, ROBERT**

Rifle Team 1,2,3,4; Hi-Y 1,2,3,4; Psychology 4.







PATTON, NORMAN LEE

Band 1,2,3,4; Orchestra 4; Art Club 1,2,3,4; Lan-Hi Staff 4; National Humor Society 4; Radio Guild 2; Student Council 1; President of Quill & Scroll 4.

PIERCE, BETTY

G.A.A. 1,2,3.



PRINZAVALL, VITO

Intramural Basketball 1, 3, 4; Track 3,4; Football 1,2,3,4; "L" Club 3,4.

PURVES, LAWRENCE

Swin Team 2; Art Club 1,2,3,4; Psychology Club 4; Student Council 1.



RAMEY, PATRICIA

Distributive Education 4; G.A.A. 2; Y-Tecns 1,2,3,4.

REDDING, PATRICIA

Art Club 1,2,3,4; Lan-Hi Staff 4; A Cappella Choir 3,4; Psychology 4; Quill & Scroll 4.



REES, SONDRA YVONNE

Youth for Christ 3,4; G.A.A. 2,3; A Cappella Choir 3,4; Librarian 3; Student Council 3.

REESE, LELAND RAY

Track 1,2,3,4; Cross Country 2, 3; A Cappella Choir 2,3,4; Hi-Y Club 3,4; Key Club 3,4; "L" Club 2,3,4; Psychology Club 4; Student Council 4.



RICHARDS, CAROL

Lanecon 1, 2, 3, 4; Psychology Club 4; Science Club 3.

RIMINI, ELEANOR

Debate Squad 4; Distributive Education 4; G.A.A.; Lanecon 1,2.

**ROBERTS, JOSEPH**

Intramural Basketball 1, 2, 3, 4;  
Distributive Education 4; Hi-Y  
Club 1, 2.

**ROY, BEVERLEY JOYCE**

A Cappella Choir 3, 4; Lancon  
1, 2; Transfer from Rochester 2.



**RUMBLE, JUDITH**

Psychology Club 4.

**RUSH, RICHARD**

Tennis 1, 2; Distributive Educa-  
tion 4.



**RYAN, JOSEPH DONALD**

Student Council 1, 2, 3.

**SANDS, GORDON DEAN**

Band 1, 2, 3, 4; Orchestra 3, 4;  
Psychology Club 4; Science Club  
3, 4.



**SCHEUFERMAN, DAVID ARNOLD**

Bible Team 1; Track 1; Key Club  
3, 4; Psychology Club 4; Student  
Council 2.

**SCHLUTER, ANN**

A Cappella Choir 4; G.A.A. 3, 4;  
Lancon 4; Lan-Hi 4; Psychology  
Club 4; Y-Teens 1.



*An aftergame dance*



SCHMIDT, MARY  
Distributive Education 4; G.A.A.  
1,2,3.

SCHUH, ROSE MARIE  
Transfer from S.H.S. 4.



SHARP, ALLAN

SHEPARD, JEANETTE LAREE  
Band 1,2,3,4; G.A.A. 1,2; Lan-  
phier Light Staff 4; Student  
Council 1,2; Band Officer 4.



SHERROCK, CAROL  
A Cappella Choir 2,3,4; Science  
Club 3,4.

SKODA, KENNETH EUGENE



SMITH, LAWRENCE  
Intramural 1,2,3,4; Psychology  
4; Hi-Y 3,4; Art Club 1,2,3,4;  
Football 1,2,3.

SMITH, STUART RAY  
Baseball 2; Basketball 3; Golf 3;  
Track 3; A Cappella 2,3,4; Boys  
Ensemble 3; Mixed Ensemble 2,  
3; Art Club 1.

*A scene from the fall play,  
"Dear Ruth."*



SMITH, THOMAS

Band 2,3,4; Distributive Education 4; Hi-Y 4; Psychology Club 4.

SPENT, ROBERT

Baseball 2; Basketball 1; Track 3; A Cappella Choir 2,3,4; Boys' Ensemble 4; Psychology Club 4; Student Council 2; Fall Play 4; Intramural 1,2,3,4.



STANBERRY, DELORES ANN

Transfer from F.H.S. 2; Distributive Education 4.

STARLING, CHARLES

Cross Country Track 1,3; Science Club 2,3,4; Psychology Club 4; Track 1.



STEWART, LINDA

Psychology Club 4.

STOUTAMYER, HARRY

Baseball 2,3,4; Basketball 1,2,3,4; Football 1,3; Tennis 1,2; Track 1; A Cappella Choir 3,4; Student Council 1; "L" Club 2,3,4.



SUTTON, GARY

TAYLOR, RICHARD KEITH

Art Club 3,4; National Honor Society 4; Youth for Christ 4; Key Club 4; Hi-Y 4.



TERTEL, DONALD OTTO

A Cappella Choir 2,4.

THIESSEN, BARBARA JEANNE

Art Club 2; Class Officer 4; Lan-Hi 4; Psychology 4; Usherettes 4; F.T.A. 1,2; G.A.A. 1; Quill & Scroll 4.





THOMPSON, DOLORES  
Y-Teens 2,3; Transfer from Ursuline Academy.

THOMPSON, ELEANOR  
Lancon 1, 2, 3, 4; Psychology Club 4; Radio Guild 2; Y-Teens 3; Youth for Christ 3.



THOMPSON, MERLE

THORNBURGH, PAUL EDWARD  
Football 1; Golf 1; Track 1,2,4; Cross Country 2,3; Hi-Y 1,2,3,4; Key Club 3,4; National Honor Society 4; Radio Guild 3; Student Council 3; "L" Club 2,3,4; Quill & Scroll 4.



TRIPPEL, CHARLES  
Band 1,2,3,4; Orchestra 3,4; Key Club 3.

TUCHMAN, ROBERT  
Band 3,4; Distributive Education 4.



VALENTI, ROBERT JOHN  
Distributive Education 4.

VANCE, CHARLES EDGAR  
Baseball 2; Basketball 1,2,3; A Cappella Choir 4; "L" Club 1,2,3,4.



WALL, ROBERT RALPH  
Rifle Team 1,2,3; A Cappella Choir 3,4; Boys' Ensemble 4; Mixed Ensemble 3; Art Club 1, 2,3,4; Key Club 3,4; Lan-Hi Staff 4; National Honor Society 4; Psychology 4; Student Council 1,2,3; Quill & Scroll 4.

WATERS, SANDRA

**WEIDLER, VERNA JEAN**

A Cappella Choir 3,4; Psychology Club 4; Y-Teens 3; Science Club 3; Student Council 3,4.

**WEISSBERG, NANCY ANN**

Fall Play 4; A Cappella Choir 3,4; G.A.A. 1,2; Lanecon 1,2; Lan-Hi Staff 4; Senior Class Play 4.



**WEST MELVIN**

Rifle Team 2; Track 1,2; A Cappella Choir 2,3,4; Key Club 2,3,4; "L" Club 3,4; Psychology Club 4; Student Council 1,2,3; National Honor Society 4; Fall Play 4.

**WHALEN, SHARON**

Transfer from Ursuline Academy 2; Future Nurses of America 3,4; Psychology Club 4; Lan-Hi 4; A Cappella Choir 3,4.



**WHEELER, MARILYN RUTH**

A Cappella Choir 3,4; Radio Guild 3; Psychology Club 4; Lan-Hi Staff 4.

**WHEELING, LUCILLE**

Lanecon 2; Psychology Club 4; Y-Teens 2,3,4.



**WHITMORE, JAMES DANIEL**

Intramural 1,2,3,4; Psychology Club 4.

**WHITNEY, KING**

A Cappella Choir 2,3,4; Key Club 3,4; Student Council 1,2,3,4.



*The clown band for the LAN HI sales campaign.*



WHITWORTH, CHARLENE  
A Cappella Choir 3,4; Science Club 3; Usherettes 4; Psychology Club 4; G.A.A. 1,2.

WILCOXON, KENNETH LEE  
A Cappella Choir 3,4; Intramural 1,2,3,4.



WILLIAMS, PATRICIA  
Psychology Club 4.

WILLIS, NANCY  
Transfer from Ursuline Academy 4.



WILSON, EDWARD LEE  
Basketball 2; Senior Class Play 4; Football 1,2,3,4; Track 1,2,3; Intramural 1,2,3,4; Key Club 3,4; "L" Club 2,3,4; Psychology Club 4; Hi-Y 4.

YUCUS, PATRICIA  
Transfer from Ursuline Academy 2.



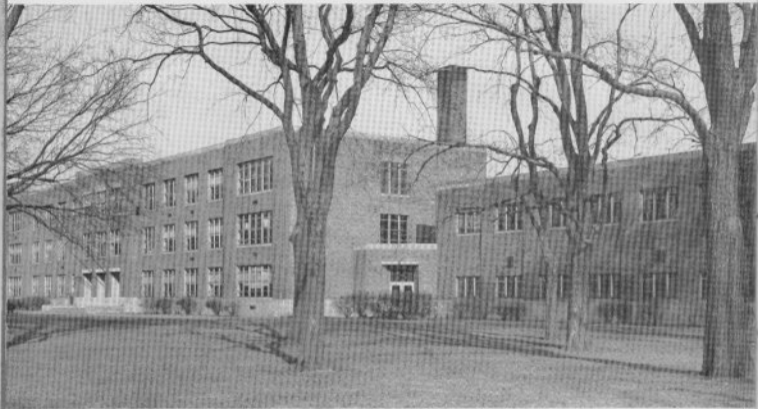
ZILINSKI, DOROTHY  
G.A.A. 3; Psychology Club 4; Y-Teens 2.

ZIMMERMAN, BETTY JOAN  
Psychology Club 4; Distributive Education 4.



ZIMMERMAN, JAMES  
Youth for Christ 4; Hi-Y 2,4.

ZUMMO, ROSALIND  
Transfer from S.H.S.; Psychology Club 4; Student Council 4.



*ALMA MATER*